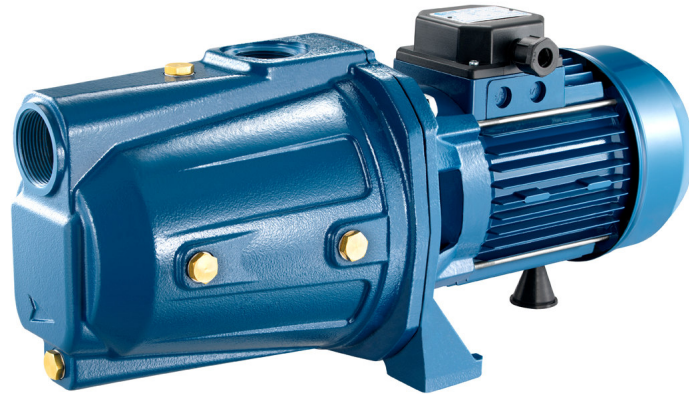




CAM 150 - 300



USES

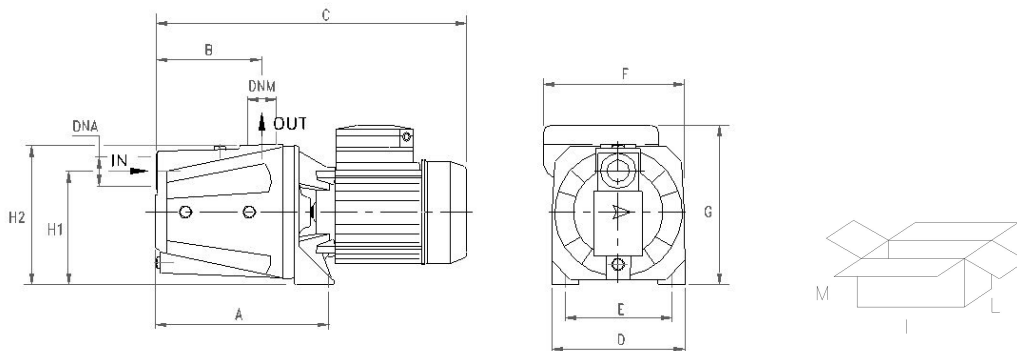
Self-priming centrifugal pump for water supplies (even if mixed with gas) in small household systems, connected to autoclave tanks, for transferring liquids and emptying tanks; also used for gardening.


CONSTRUCTION FEATURES

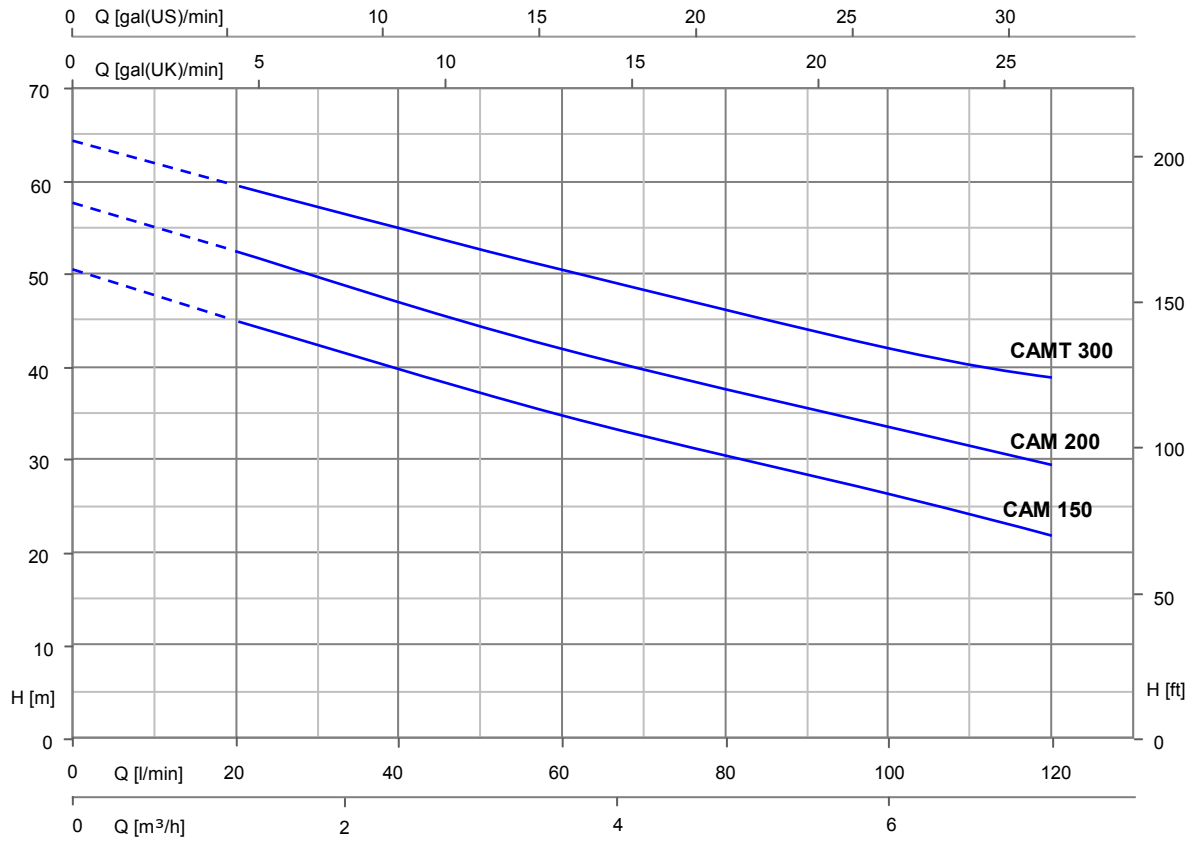
Cast iron pump casing with threaded inlet and outlet; cast iron motor bracket; impeller in Noryl® or in brass; ceramic - graphite mechanical seal; motor shaft in AISI 416 steel; world leading brand ball bearings; liquid temperature range 0 - 50 °C; max. operating pressure 8 bar.

MOTOR

2 pole electric induction motor for continuous operations; stator made with low-loss laminated electric sheet steel; insulation Class F; IP 44 protection level; thermal protection for single-phase models; the user is responsible for supplying protection for the three-phase models.



TYPE	DIMENSIONS (mm)												Kg	DNA G	DNM G
	A	B	C	D	E	F	G	H1	H2	I	L	M			
CAM 150	269.6	167	506	203	165	220	231.5	175	220	520	240	250	24.5	1" 1/2	1" 1/4
CAM 200	269.6	167	506	203	165	220	231.5	175	220	520	240	250	25.5		
CAM 300	269.6	167	506	203	165	220	231.5	175	220	520	240	250	26.5		



TYPE		P ₂		P ₁ (kW)		AMPERE		Q (m ³ /h – l/min)						
1~	3~					1~	3~	0	1.2	2.4	3.6	4.8	6	7.2
230 V – 50 Hz	230/400 V – 50 Hz	(HP)	(kW)	1~	3~	1x230V 50Hz	3x400V 50Hz	0	20	40	60	80	100	120
CAM 150	CAMT 150	1.5	1.1	1,8	1,7	7,9	3,3	50,7	44,9	39,6	34,7	30,4	26,3	21,8
CAM 200	CAMT 200	2.2	1.65	2,2	2,1	10,3	3,9	58,3	52,4	46,7	42,0	38,0	34,0	29,3
-	CAMT 300	3	2.2	-	2,5	-	4,8	64,8	59,6	55,1	50,5	46,0	41,9	38,7

Project data subject to modification.